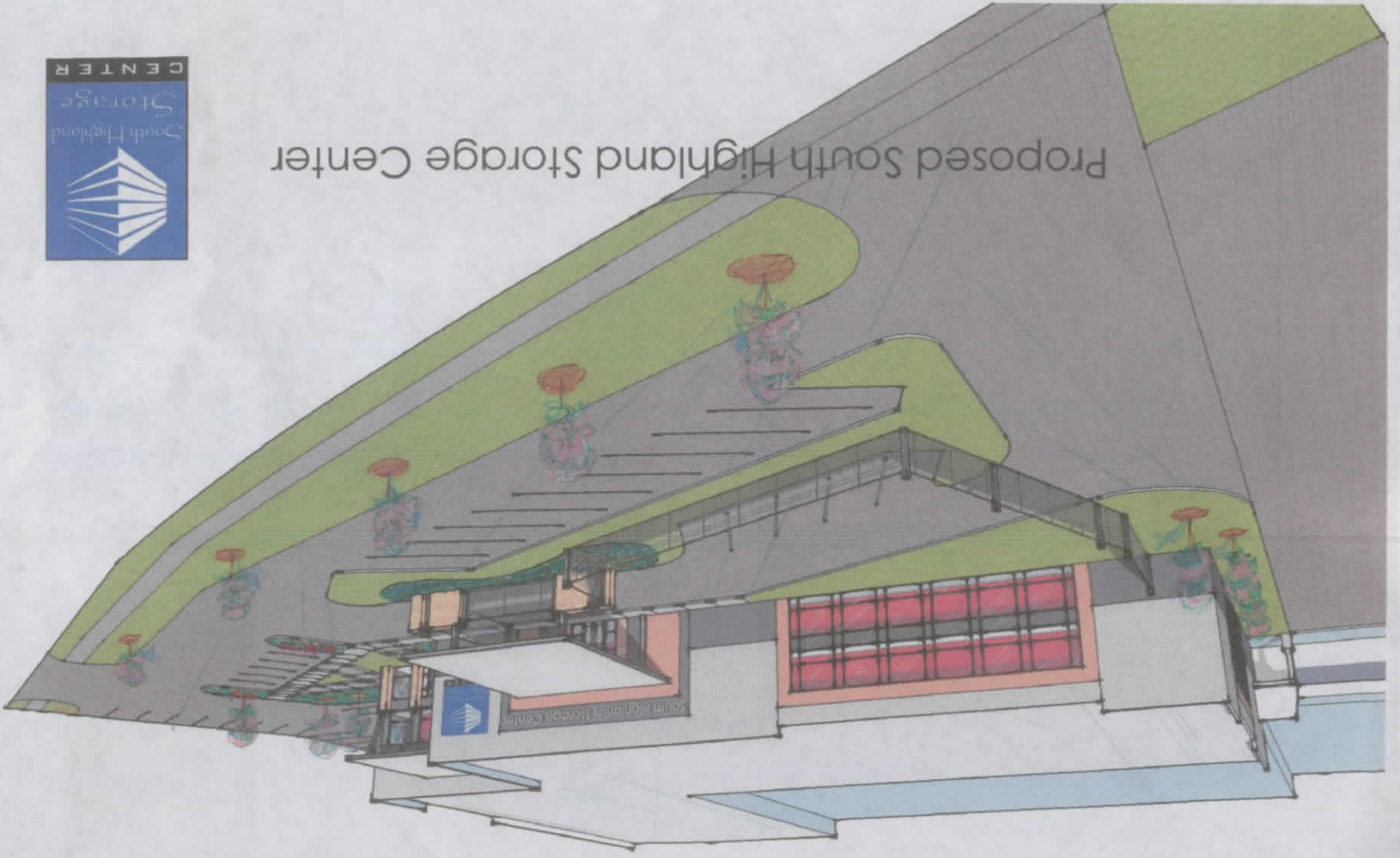




Proposed South Highland Storage Center



Proposed South Highland Storage Center



SD1.0
SITE DEVELOPMENT PLAN

2018.08
2018.08
2018.08

SITE DEVELOPMENT PLAN
PERSONAL STORAGE SPACE DEVELOPMENT
LOT 2, YANCEY'S FERN SUBD.
4018 FERN AVENUE
SHREVEPORT, CALDO PARISH, LOUISIANA
SOUTHERN STORAGE APPLICANT



THE LARSSON GROUP
COMMERCIAL REAL ESTATE
100 EAST CAPITOL STREET
SHREVEPORT, LA 71101
PHONE: (504) 376-1111

VICINITY MAP

NOTES

PROPERTY MAP	SEE THE PROJECT MAP
EXISTING BUILDING	SEE THE PROJECT MAP
PROPOSED BUILDING	SEE THE PROJECT MAP
EXISTING DRIVE	SEE THE PROJECT MAP
PROPOSED DRIVE	SEE THE PROJECT MAP
EXISTING DRIVE	SEE THE PROJECT MAP
PROPOSED DRIVE	SEE THE PROJECT MAP
EXISTING DRIVE	SEE THE PROJECT MAP
PROPOSED DRIVE	SEE THE PROJECT MAP
EXISTING DRIVE	SEE THE PROJECT MAP
PROPOSED DRIVE	SEE THE PROJECT MAP

PROJECT DIRECTORY

OWNER: SOUTHERN STORAGE
ARCHITECT: THE LARSSON GROUP
4018 FERN AVENUE
SHREVEPORT, LA 71101
TEL: (504) 376-1111

DESIGNER: THE LARSSON GROUP
4018 FERN AVENUE
SHREVEPORT, LA 71101
TEL: (504) 376-1111

APPLICANT: SOUTHERN STORAGE
4018 FERN AVENUE
SHREVEPORT, LA 71101
TEL: (504) 376-1111

APPLICANT: SOUTHERN STORAGE
4018 FERN AVENUE
SHREVEPORT, LA 71101
TEL: (504) 376-1111

DESIGNER: THE LARSSON GROUP
4018 FERN AVENUE
SHREVEPORT, LA 71101
TEL: (504) 376-1111



NOTES

1. REFER TO THE PROJECT MAP FOR A FULL SCALE.
2. REFER TO THE PROJECT MAP FOR A FULL SCALE.
3. REFER TO THE PROJECT MAP FOR A FULL SCALE.
4. REFER TO THE PROJECT MAP FOR A FULL SCALE.
5. REFER TO THE PROJECT MAP FOR A FULL SCALE.
6. REFER TO THE PROJECT MAP FOR A FULL SCALE.
7. REFER TO THE PROJECT MAP FOR A FULL SCALE.
8. REFER TO THE PROJECT MAP FOR A FULL SCALE.
9. REFER TO THE PROJECT MAP FOR A FULL SCALE.
10. REFER TO THE PROJECT MAP FOR A FULL SCALE.
11. REFER TO THE PROJECT MAP FOR A FULL SCALE.
12. REFER TO THE PROJECT MAP FOR A FULL SCALE.
13. REFER TO THE PROJECT MAP FOR A FULL SCALE.
14. REFER TO THE PROJECT MAP FOR A FULL SCALE.
15. REFER TO THE PROJECT MAP FOR A FULL SCALE.
16. REFER TO THE PROJECT MAP FOR A FULL SCALE.
17. REFER TO THE PROJECT MAP FOR A FULL SCALE.
18. REFER TO THE PROJECT MAP FOR A FULL SCALE.
19. REFER TO THE PROJECT MAP FOR A FULL SCALE.
20. REFER TO THE PROJECT MAP FOR A FULL SCALE.

